



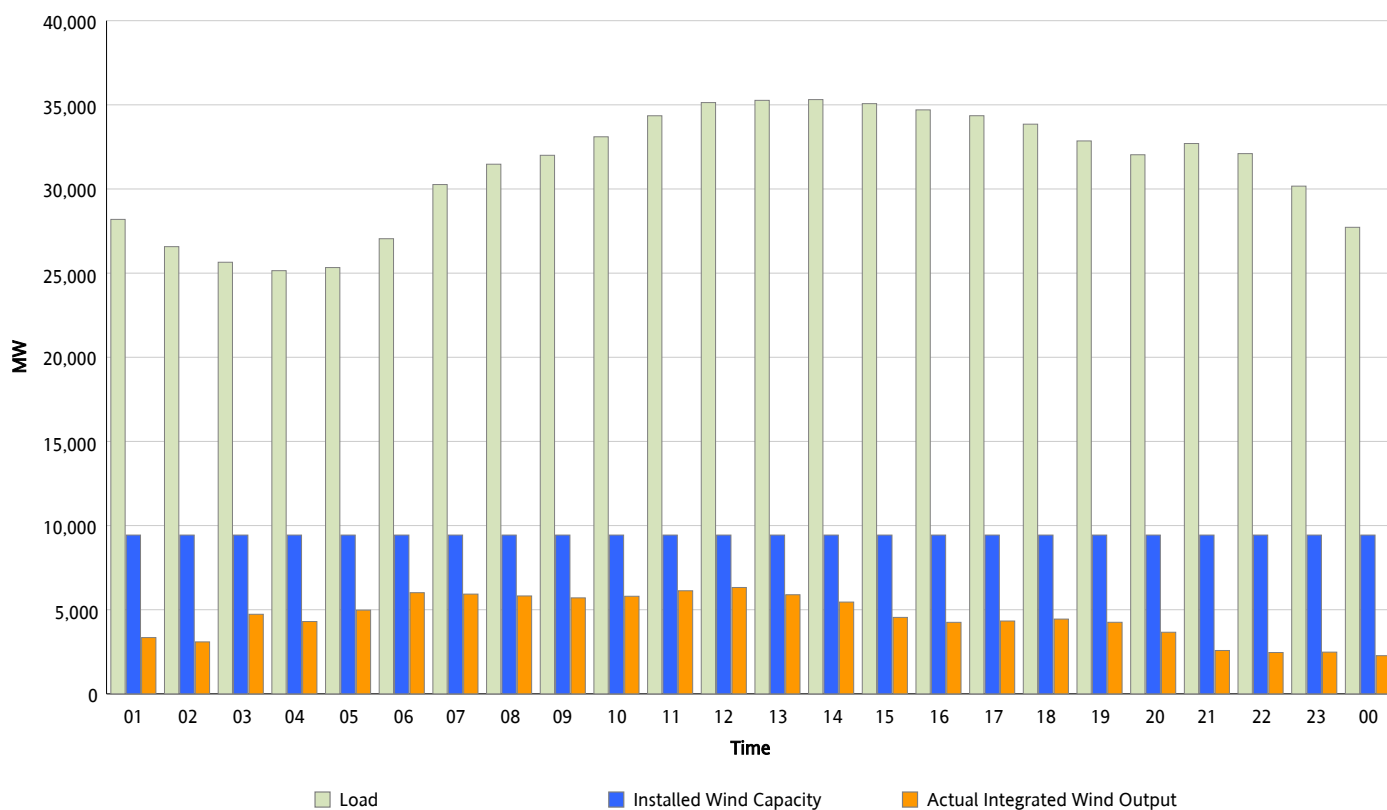
ERCOT Grid Operations

Wind Integration Report : 04/20/2012

Peak Load	35,312 MW
Load Peak Hour (HE)	14
Wind Over Peak	5,456 MW
Wind Record 04/13/12	7,925 MW
Max Wind Value*	6,605 MW
Wind Peak Time	10:43
Wind Integration %	19.06 %

Hourly Average Actual Load vs. Actual Wind Output

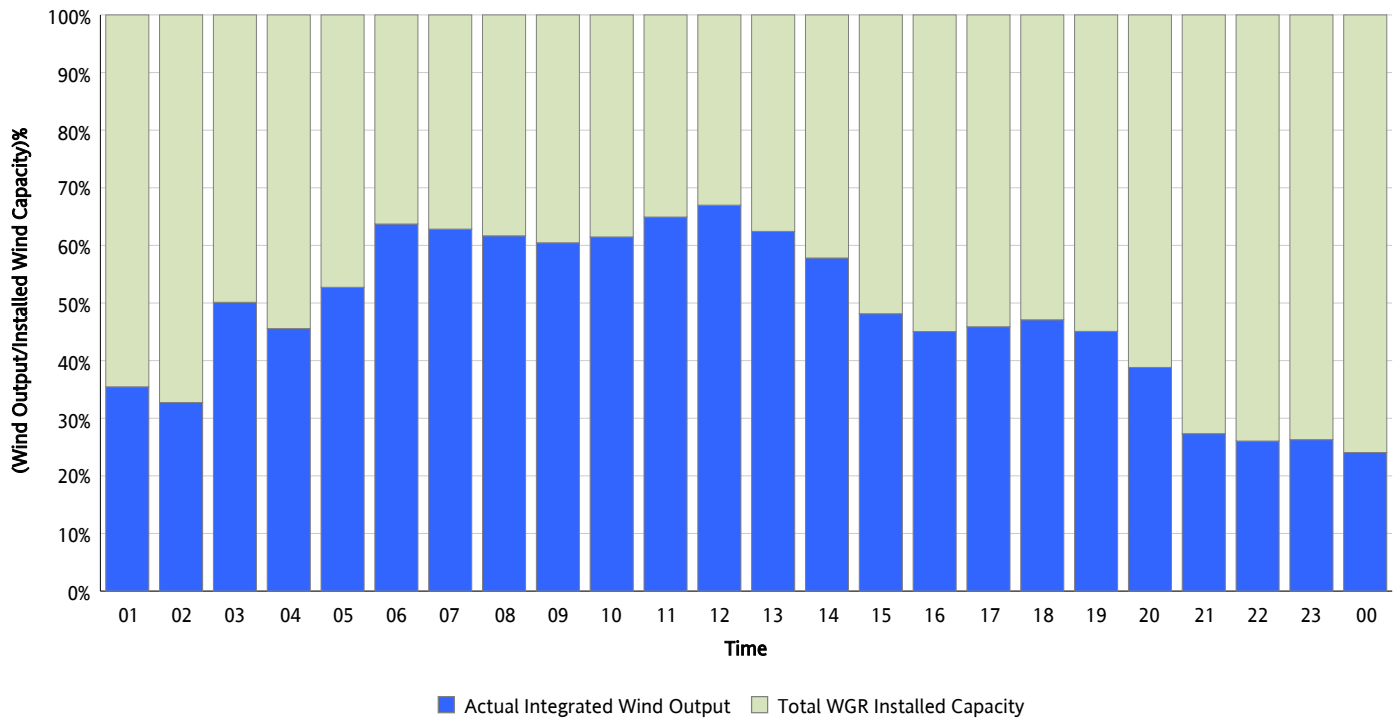
04/20/2012



* Wind Record and Wind Max represent instantaneous values and the rest of the values are integrated over the hour

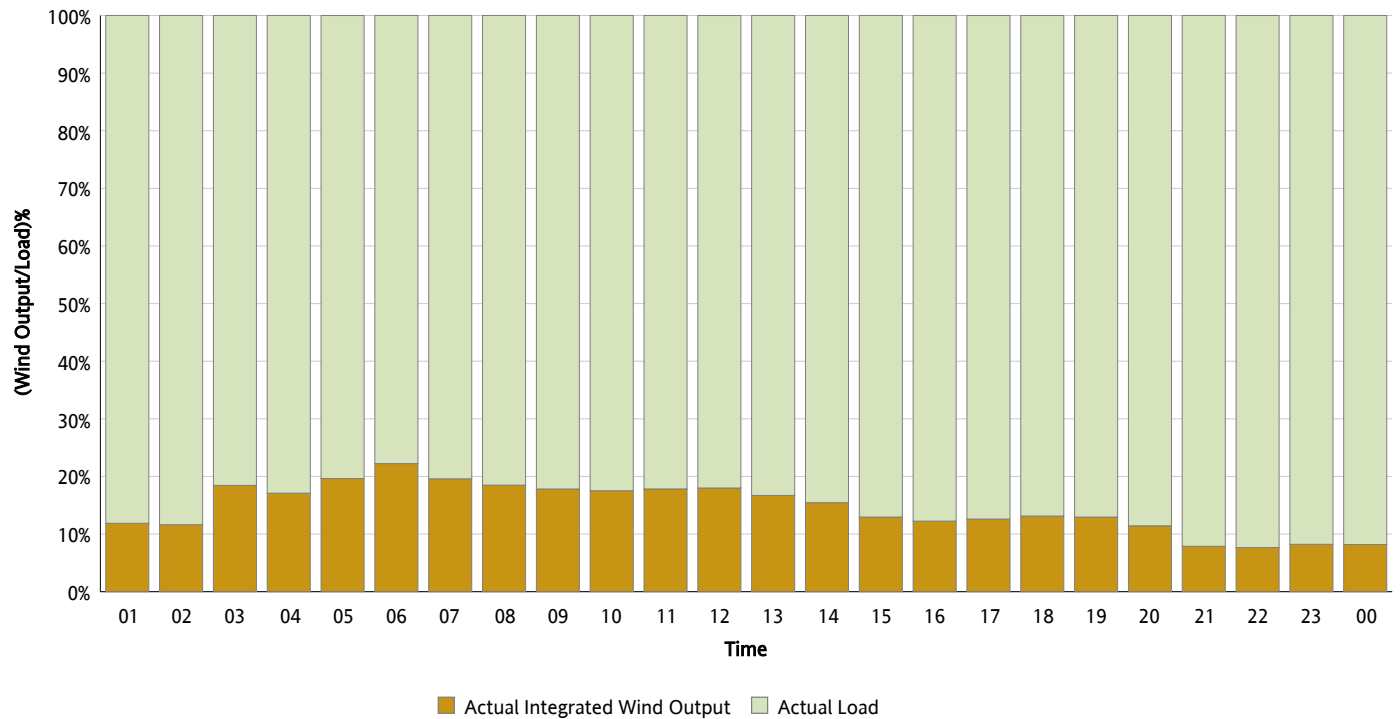
Actual Wind Output as a Percentage of the Total Installed Wind Capacity

04/20/2012



Actual Wind Output as a Percentage of the ERCOT Load

04/20/2012



ERCOT Load vs. Actual Wind Output

04/13/2012 - 04/20/2012

